



HAARSLEV™

Processing Technology

CONTINUOUS BLOOD COAGULATOR

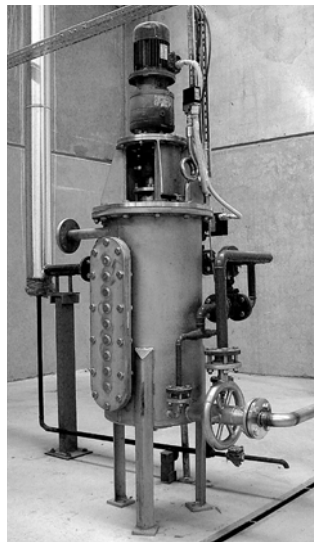
Product brochure



HAARSLEV™

Processing Technology

CONTINUOUS BLOOD COAGULATOR



This is a simple, durable setup that helps boost the effectiveness of a wide range of animal and poultry blood treatment processes by making the solids component coagulate so it's easier to remove the water content.

It's ideal for heating animal and poultry blood inputs with a relatively low proportion of solids. Heating by direct steam injection makes sure there's no burning or accumulation of deposits, and the blood coagulates effectively and under full control.

The Haarslev Continuous Blood Coagulator is specially designed for controlling how animal blood is heated and made to coagulate, using a carefully monitored flow of steam and a temperature probe in the product outlet.

“
USING STEAM INJECTION TO
CONSISTENTLY AND COST-
EFFECTIVELY HEAT AND COAGULATE
ANIMAL AND POULTRY BLOOD, PRIOR
TO MECHANICAL SEPARATION.



APPLICABLE FOR:

Blood processing and protein recovery in

- Plants that process red meat
- Plants that process poultry
- Specialist blood and protein recovery operations

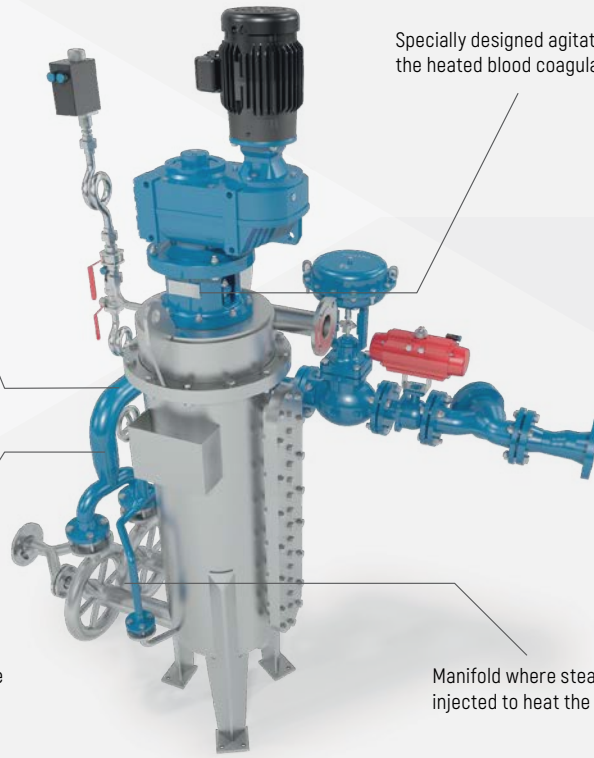
BENEFITS

- Simple, durable and cost-effective
- Blood heats and coagulates evenly under controlled conditions
- Steam valve and control sensor ensure low operating costs
- Continuous operation that boosts the effectiveness of downstream operations
- Close to maintenance-free

RAW ANIMAL AND POULTRY BLOOD (PREFERABLY FILTERED) WITH A RELATIVELY LOW PROPORTION OF SOLIDS

Modulating valve that supplies steam at set, consistent pressure

Specially designed agitator makes sure the heated blood coagulates evenly



Temperature probe regulates the steam inlet system to maintain ideal conditions for coagulation

Manifold where steam is injected to heat the blood

COAGULATED BLOOD THAT IS EASIER TO DRY AND/OR CONGEALED BLOOD FOR DOWNSTREAM MECHANICAL DEWATERING

TYPE	POWER (kW)/(hp)		WEIGHT (kg)/(lb)		DIAMETER (mm)/(ft)		CAPACITY (l/h)/(lb/h)		DIMENSIONS* (mm)/ [ft-inch]					
									Length(L)		Height (H)		Width (W)	
CBC 30	0,75	1	400	881	400	16	Up to 3,000	6,613	1,100	3' 8"	2,050	6' 9"	790	2' 8"
CBC 65	1,1	1,5	1,000	2,204	400	16	Up to 6,500	14,330	1,927	6' 4"	2,425	8' 0"	960	3' 2"

* All statements of dimensions are approximate.

We reserve the right to alter the specifications at any time without prior notice.



HAARSLEV™

Processing Technology



PROCESS IS POTENTIAL

HEAD OFFICE

Haarslev Industries A/S · Bogensevej 85
DK-5471 Søndersø · Denmark
Telephone: +45 63 83 11 00
Email: info@haarslev.com
www.haarslev.com

GLOBAL EXPERIENCE - LOCAL PRESENCE

Please contact us or visit our website
to locate the closest sales office.